

JAMEA AL KAUTHAR PROSPECTUS



Jamea al Kauthar is dedicated to welcoming students into an excellent academic atmosphere that is spiritually enriching and physically nurturing. We aspire to cultivate morality and inspire our students to graduate as able, confident citizens and outstanding role models for their communities.

CONTENTS

AIMS AND OBJECTIVES	3
JAMEA AL KAUTHAR'S SITE AND PROPERTY DETAILS	3
ADMISSION REQUIREMENTS.....	4
EAL PUPILS.....	4
SEND PUPILS	4
ISLAMIC STUDIES (MADRASAH).....	4
ALIMIYYAH.....	4
SANATAYN (TWO-YEAR COURSE).....	5
TAHFEEDHUL QUR'AN (MEMORISATION OF THE QUR'AN)	5
SCHOOL AND SIXTH FORM	5
SCHOOL.....	5
SIXTH FORM.....	5
LIBRARIES.....	
BOARDING	6
SAFEGUARDING.....	7
MEDICAL PROVISION.....	7
LAUNDERETTE	7
BOARDING SHOP.....	7
BANK.....	7
LEAVE.....	8
KEEPING IN TOUCH	8
GUARDIANS.....	8
CONTACT US.....	8
INFORMATION AVAILABLE	9

AIMS AND OBJECTIVES

Jamea al Kauthar is an academic establishment with the following aims and objectives:

1. Providing opportunities for students to acquire an in-depth understanding of Deen.
2. Developing the love for Allah and His Prophet Sallallahu Alayhi Wasallam.
3. Instilling religious and moral values, mutual respect and tolerance of those with different faiths and beliefs.
4. Producing individuals who have the capacity to think for themselves, to know their own minds but to have the flexibility to listen to others.
5. Encouraging all pupils to appreciate the needs of others and be sensitive to them, to work in teams and be able to recognise right from wrong.
6. Encourage students to respect and abide by the rule of law and be an exemplary citizen.

JAMEA AL KAUTHAR'S SITE AND PROPERTY DETAILS

1. The former Royal Albert Hospital is a historical building which at the time of its construction, enjoyed the moral and financial support of members of the aristocracy and of wealthy businessmen. The day of the laying of the foundation stone was a major historical occasion for the city of



Lancaster. The Mayor invited all local inhabitants to observe a holiday in the town for half a day. Queen Victoria also granted her patronage to the institution and donated 100 guineas.

2. Royal patronage continued to be granted by her successors, i.e. King Edward VII, King George V, King George VI. As such, the property has been very well maintained and is one of Lancaster's most prominent and historical buildings.
3. Jamea al Kauthar comprises of various buildings covering 300 000 sq. ft. surrounded by 20.5 acres of beautiful landscaped gardens. A Victorian, four storey, Grade II listed building with extensive accommodation forms the boarding. Two other buildings comprise the Madrasah and School.

ADMISSION REQUIREMENTS

- All applicants should be female and between the age of 11-18 years.
- The conditions as set out in the Admissions Policy must be met.

EAL PUPILS

1. If pupils have been found to require additional support after admission for EAL, the school will work together with English teachers to provide support in the following ways:

- In-class support to facilitate access to the full curriculum.
- Withdrawal for intensive work on basic Literacy/Numeracy skills.
- Ensure that programme of study and the materials used to deliver them are suited to the pupils' needs, enabling them to achieve and progress.

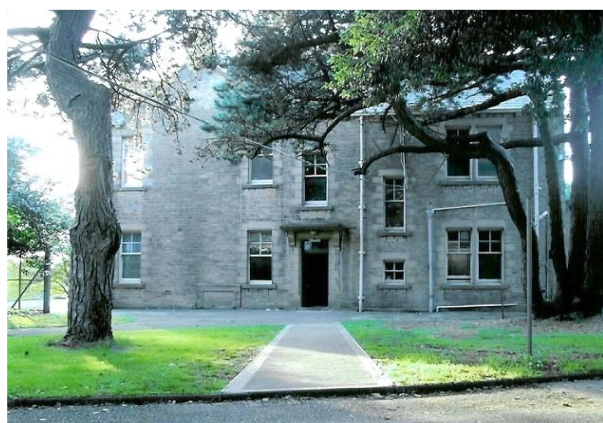
SEND PUPILS

- 2.1. Pupils who need additional support on the basis of SEND will be catered for in line with Section 4 of the Equality Act Advice from the Department of Education.
- 2.2. An additional fee may be charged to meet the cost of the support offered, facilities provided and additional staff training required.

ISLAMIC STUDIES (MADRASAH)

ALIMIYYAH

The Alimiyyah curriculum is designed to develop a thorough understanding of the key principals of Deen.



The curriculum consists of two levels.

LEVEL 1: Students study this two-year course as the prerequisite needed for admission to the higher level. The study comprises of the Urdu language, Arabic language and Literature, Morphology (Sarf), Arabic grammar, Tajweed and the Fard-Ain of Deen.

LEVEL 2: Having completed Level 1, Fiqh (Jurisprudence), Tafseer (translation and the commentary of the Holy Quran), Hadeeth, Usul ul Hadeeth, Usul ul Fiqh is studied in Level 2. Finally the course ends with the six authentic books read with the “Chain of Transmission”. This is a 4 year course.

These levels are delivered alongside the National Curriculum or Sixth Form subjects.

SANATAYN (TWO-YEAR COURSE)

We also offer an abridged version of the Islamic Teaching programme, which runs over a two-year period. This includes: Tajweed, Qur'anic commentary, Ahadith, everyday Masai'l, Aqaa'id and basic Arabic. This course is delivered in the English medium and can be taken in conjunction with A Level courses.

TAHFEEDHUL QUR'AN (MEMORISATION OF THE QUR'AN)

Students who wish to memorise the Qur'an can enrol onto the Tahfeedhul Qur'an course, where the expected length of the course is three years. However, all students will memorise at their own pace, which will affect the length of study. The course also offers simple Islamic studies.

SCHOOL AND SIXTH FORM

SCHOOL

KS3: English, Maths, Science, PSCHE, Urdu, ICT, Art, Humanities, Geography, History, and Physical Education.

KS4: English Language, English Literature, Biology, Chemistry, Physics, Maths, Urdu, Religious Studies, PSCHE, Art, Physical Education, and History.

- In Year 10, all core science GCSEs will be taken by students.
- In Year 11, English Literature, English Language and Additional Science GCSEs will be taken.

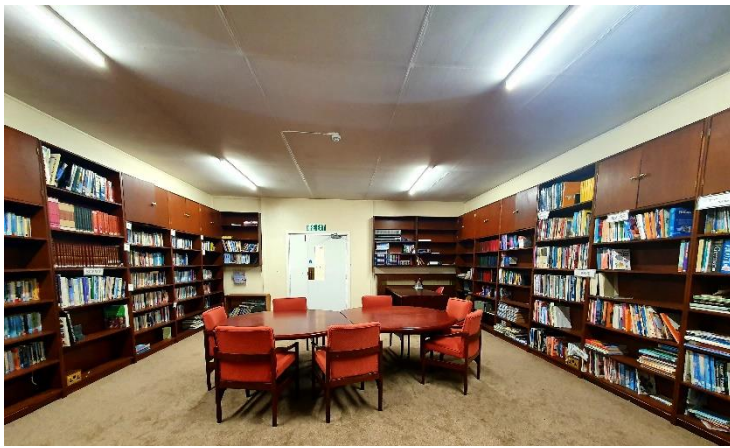
Note: GCSEs exclude Physical Education, PSCHE and Art.

SIXTH FORM

Subjects in Sixth Form are determined according to student numbers.

- GCSE Mathematics
- GCSE English
- A Level English Combined
- A Level Religious Studies
- A Level Urdu
- A Level Maths
- BTEC Level 3 Health & Social Care
- BTEC Level 3 ICT
- BTEC Applied Science
- NVQ Level 3 courses
- A number of additional short courses





LIBRARIES

There are two libraries: one for school and one for madrasah. Both libraries house books of all taught subjects in addition to wider reading materials.

BOARDING

Jamea al Kauthar offers a secure and happy home environment for boarders.

The boarding accommodation is organised into four Daars (houses). There are two Daars on each floor, with each Daar having its own Daar Apas. The accommodation in the Daar is spacious, comfortable and adequately furnished.



Students are encouraged to bring suitable posters, frames and ornaments to personalise their rooms.

DAILY ROUTINE

WEEKDAY ROUTINE		WEEKEND ROUTINE	
Tahajjud (optional)	Before Fajr	Saturday	
Fajr	Time varies depending on season	Halaqah (sister circles)	2.00pm
Breakfast	7.00am-7.30am	Nadia (student-led assembly)	6.00pm
Madrasah	8.00am-12.00pm	Sunday	
Lunch	12.15pm-1.00pm	Mutaliah	6.00pm
Zohr	1.30pm		
School/Sixth Form	2.00pm-5.00pm		
Tea	5.00pm-5.30pm		
Mutali'ah	6.00pm-8.00pm		
Dinner	8.00pm-8.45pm		
Esha	9.00pm		
Bed-check	10.30pm		

Note: all Salaah times are subject to change.

SAFEGUARDING

Jamea al Kauthar is committed to safeguarding and promoting the welfare of all pupils. We ensure that our students have multiple opportunities to develop themselves in an atmosphere consistent with the provision of safe and effective care, thus being proactive to enable all students to have the best outcomes. Jamea al Kauthar's commitment to the development of good practice and sound procedures ensures that child protection concerns and referrals are handled sensitively, professionally and in ways which support the needs of the child by following agreed upon action protocols.

We maintain an ethos where students feel secure and are encouraged to talk and have their voices heard. As part of the Deeni ethos, staff members ensure that the student is always present, and is given plenty of channels to make itself heard. We have a team of dedicated boarding and non-boarding Apas who give individual guidance and care for students at Jamea al Kauthar. Each house has a senior Dar Apa whose first priority is the welfare of the girls. There are numerous systems in place to ensure that student concerns are addressed immediately and consistently.

MEDICAL PROVISION

On admission, all students are registered with the school doctor. The school has trained first aiders on site, and a well-furnished Health Centre for those students who need it. Health care plans are in place for students who require them. Students are cared for on-site and taken to the local doctor/dentist if further care is needed.



LAUNDERETTE

Adequate laundry facilities are in place for boarders to wash and dry their clothing and bedding. Washing machines, dryers, drying rooms, and ironing facilities are all available for students.

BOARDING SHOP

The boarding shop holds snacks, stationery items and toiletries for students to purchase.

BANK

If students have large sums of money, this is deposited into the Jamea Bank for safekeeping. The bank opens at fixed times, and students are able to withdraw spending money each time.

LEAVE

We try to keep a balance between meeting the needs of individual families and maintaining a strong and stable community in the school.

- Annual Jamea al Kauthar holidays follow a similar pattern to the national main holiday schedule, including the half-term holidays.
- Holidays for both Eid occasions are also granted.
- There is increased leave granted in the first half-term for new boarders.

KEEPING IN TOUCH

All boarders need regular contact with home. Girls are encouraged to contact their parents by letters and telephone. Mobile phones are not allowed; however, pay phones are located in the main corridor where students can make outgoing calls. If a parent/guardian needs to make contact with their child, they can ring in to the office or send an email, and the student will be informed that she needs to call home.

GUARDIANS

Overseas students need a guardian in the UK for their daughter. The guardian acts *in loco parentis* (in place of parents) in emergencies and will be responsible for the care and accommodation of the students during the holidays and fourth weekends when they go home. The responsibility to organise a guardian in the UK is solely with the parents. Jamea al Kauthar cannot take responsibility for the health and safety of your child whilst she is with the guardian.

CONTACT US

By phone

- **Weekdays 9am to 5pm and weekends 9am to 12pm: Line 2 on 01524 389898** (please note calls may not be answered during lunch from 12:30 to 1:30)
- **Outside of these times: Line 1 on 01524 389595**

International callers, please dial:

(+)44 1524 389898

By post

Jamea al Kauthar
Ashton Road
Lancaster
LA1 5AJ

[Click here to view a map of our location](#)

By email:

admin@jamea.co.uk

Proprietor

(Hazrat Maulana) Fazlehaq Wadee (Sahib) D.B. (same contact details as above)

Chair of Governors

Maulana Ikraam Adam (can be contacted via post at the Jamea postal address)

INFORMATION AVAILABLE

The following policies and documents are made available to the parents of pupils or to parents of prospective pupils:

1. Admissions Policy
2. Particulars of the curriculum offered by the School.
3. Anti-Bullying Policy.
4. Child Protection Policy.
5. Health and Safety Policy.
6. First Aid Policy.
7. Complaint Procedure.
8. Numbers of formal complaints received during the preceding year.
9. Policy on behaviour, discipline and adopted sanctions including exclusions.
10. An annual written Madrasah and School report of the child's progress and achievements.
11. School academic performance during the preceding school year, including the results of any public examination.
12. A full report following an Ofsted inspection will be provided by any date specified by the body who conducted the inspection.

Additional policies are also available, upon request.

On behalf of (Hazrat Maulana) Fazlehaq Wadee (Sahib) D.B.